



# Status of Implementation of the IMAP for Coast & Hydrography in the Maltese Islands

---

**Meeting of the CORMON on Coast and Hydrography  
Rome, Italy, 21-22 May 2019**

---

ALEXIA VELLA, ASSISTANT PLANNING OFFICER, PLANNING AUTHORITY - MALTA

# Status of Implementation of the IMAP in the Maltese Islands

---

## **Common Indicator 15 – Location and Extent of the Habitats Impacted Directly by Hydrographic Alterations**

- Governance Issues - New Working Arrangements
- Malta is monitoring this indicator through:
  1. Environmental Assessment Procedures
  2. One of the action under the LIFE River Basin Management Plan (RBMP)

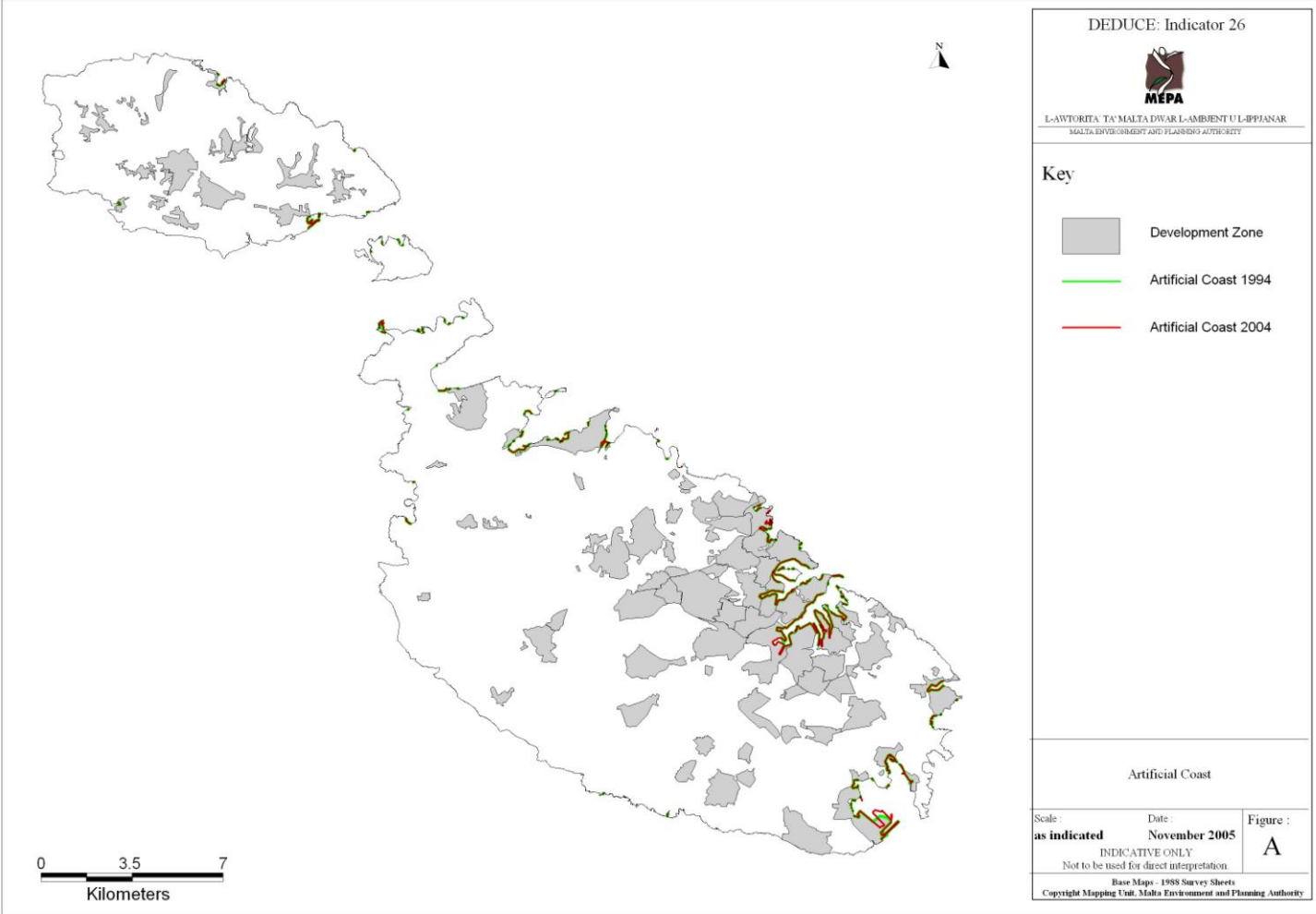
# Status of Implementation of the IMAP in the Maltese Islands

---

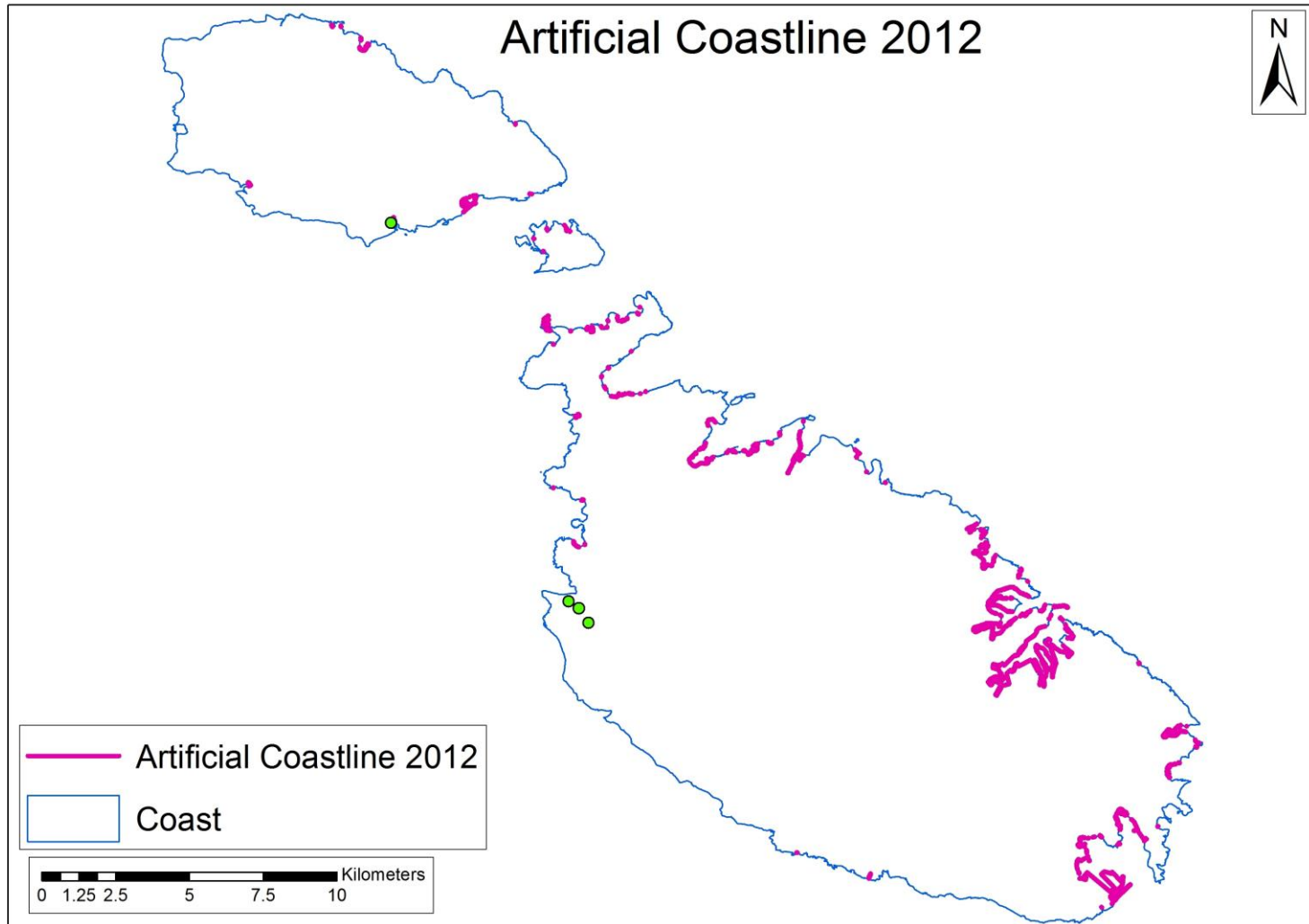
## **Common Indicator 16 – Length of Coastline Subject to Physical Disturbance due to the influence of Manmade Structures**

- Already calculated artificial coastline (DEDUCE Project: 1994 and 2004)
- 2012: Possible to calculate
- 2016: Difficult to calculate
- Discrepancies between the base map and the Ortho photos
- Working on a new base map – expected to improve calculations for the length of artificial coast
- Considering 1989 survey as baseline

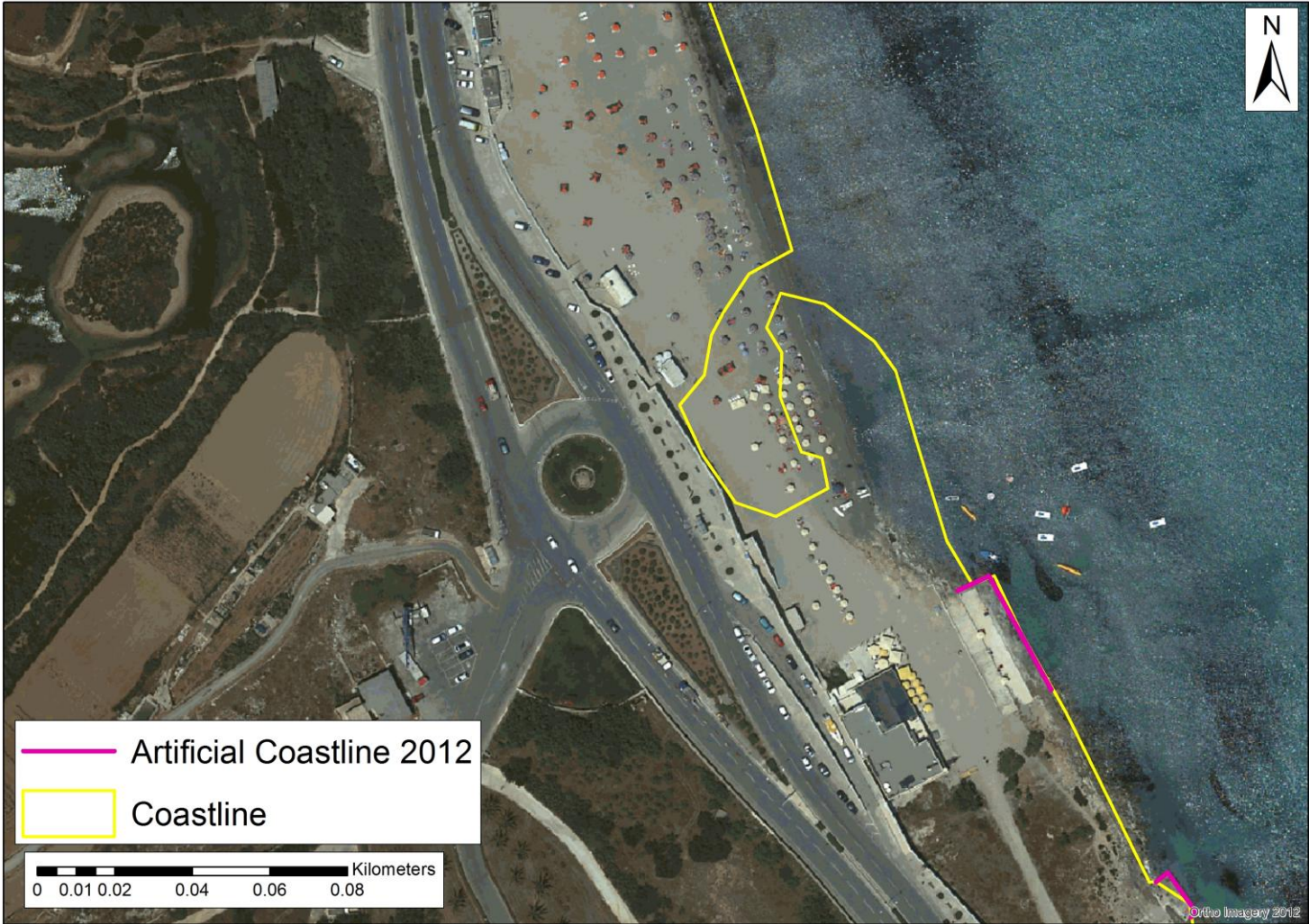
# Length of Artificial Coastline under the DEDUCE Project



# IMAP Indicator 16: Length of Artificial Coastline for the Year 2012



# Example of Discrepancies Between the Base Map and Orthophoto





# Thank you

---

Alexia Vella / Planning Authority/ Malta  
alexia.vella@pa.org.mt

---

[www.paprac.org](http://www.paprac.org)