



Israel - Implementation of monitoring - common indicators 15, 16 and 25

**Meeting of the CORMON on Coast and Hydrography
Rome, Italy, 21-22 May 2019**

Maayan Haim, Coastal Environment Engineer, Marine Environment Protection Division
Israel Ministry of Environmental Protection

Preparation of a monitoring plan

EcAp MED II project

A monitoring plan has been prepared under this project.
The final version was sent on December 2017.

Common Indicator 15

Proposal for Discussion

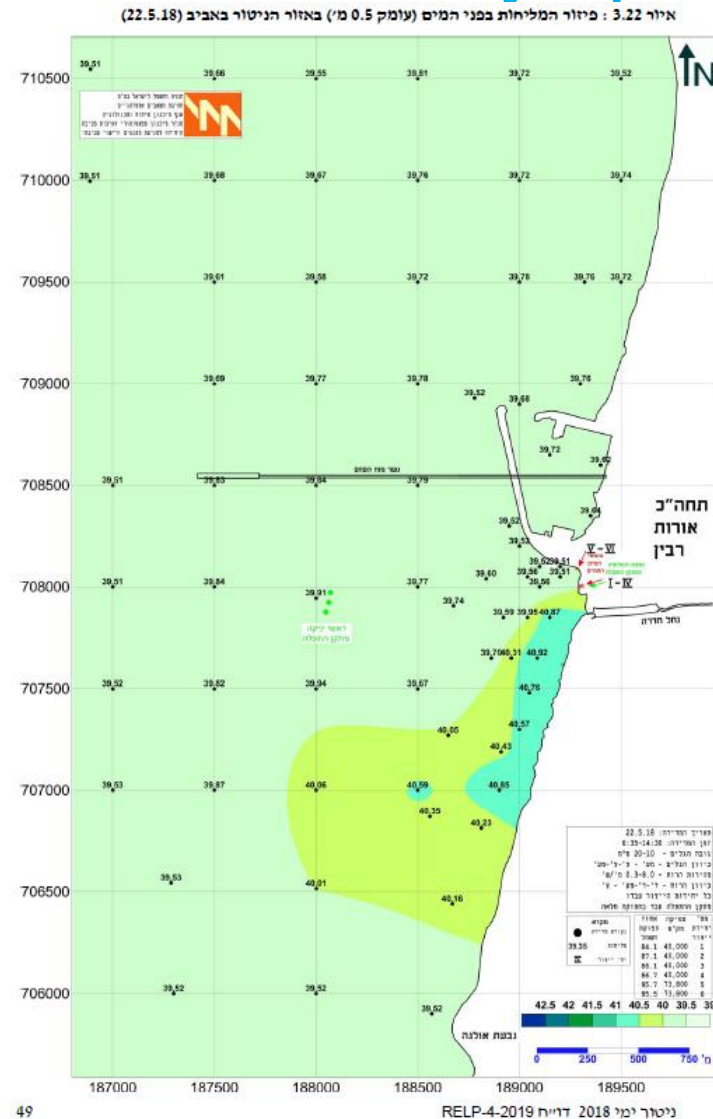
Our opinion is that this indicator is not suitable for monitoring at the moment, for the following reasons:

- **There is a large knowledge gap of the actual impact of hydrographic alterations on Mediterranean habitats**
- Without sufficient research regarding the actual impact, it is impossible at this stage to determine which parameters need to be monitored.
- The extent and spectrum of all possible "hydrographic alterations" on the one hand and the "habitats impacted" on the other, makes it impractical to try and have a solid indicator to follow and monitor

Recommendation: **Change its status to a proposed indicator**, until a more thorough body of knowledge on impacts of hydrographic alterations on Mediterranean habitats is prepared.

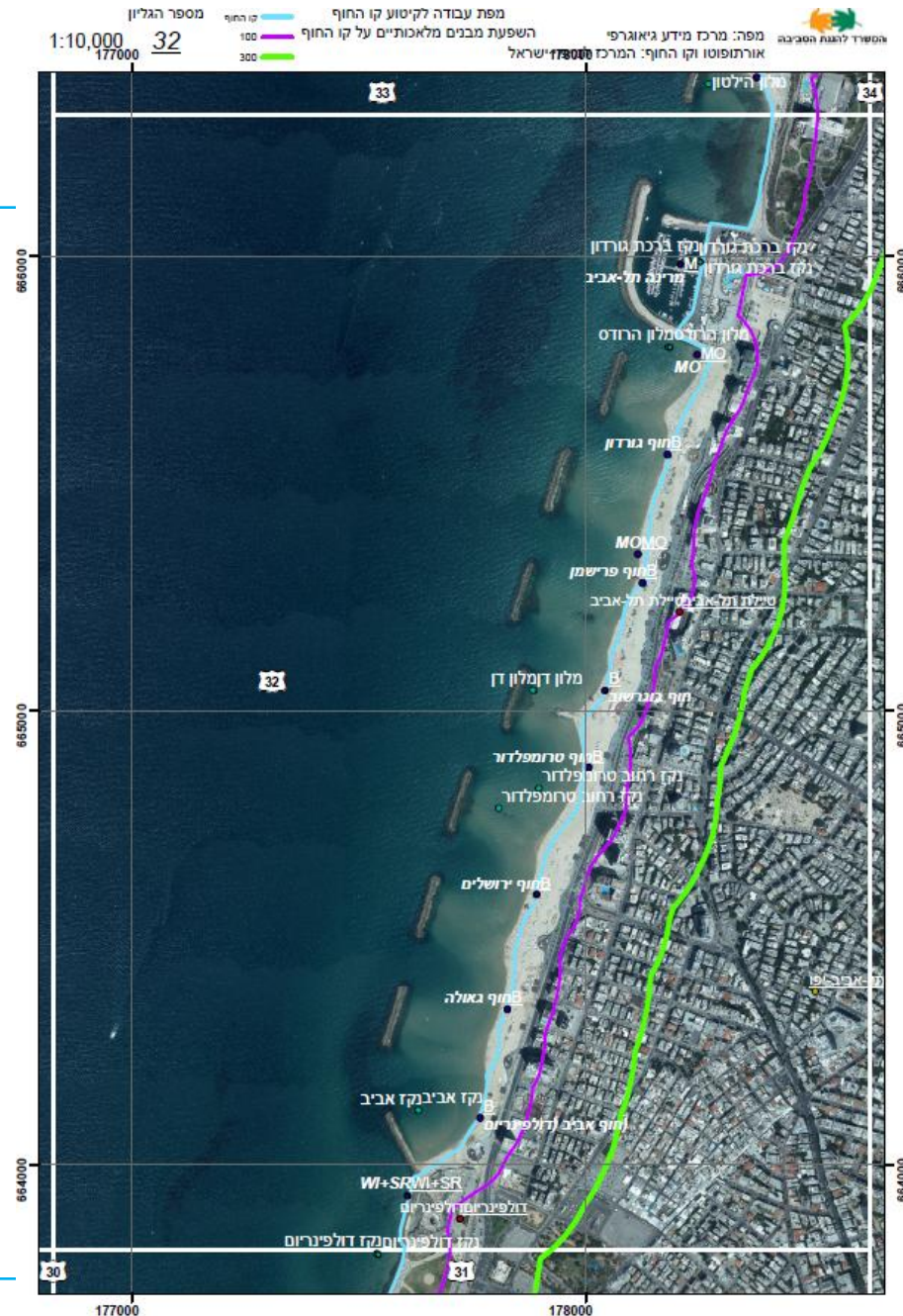
Common Indicator 15 – Example – Hadera desalination Plant – salinity spatial distribution

- One parameter, well defined, easy to measure at any depth
- Distribution of concentration (measurable and objective), not impact
- “Direct impact” on habitats is impractical to measure as opposed to “subjected”



Common Indicator 16

- A very straight forward indicator, simple to measure and manage.
- Annual high resolution orthophoto available
- Reclamation – a little problematic, what about erosion?



Common Indicator 25

- Needs some discussion as to what land uses are considered “changed”
- Agriculture? Agricultural construction?





Thank you

Maayan Haim
Marine Environment Protection Division
Israel Ministry of Environmental Protection
maayanh@sviva.gov.il

www.paprac.org